



BOOKSTORE

UNIVERSITY
MENSUENURSE

ONEY STREET

CAMBRIDGE

GIFTS & SOUVENIRS

Premier
travel

Premier
travel

Grant Cameron

BA Hons MArch MA PG Dip ARB

Managing Director of **Cameron Bosque Brookes Architects**

Office and Retail Projects



Sidney St - Retail Fit Out (CBBA)	4
Excel House - Office Buildings (CBBA)	6
Bond House - Office Fit Out - Cat B (CBBA)	10
Floral St - Retail Shell and Core (BMA)	12
Floral St - Office Fit Out - Cat A (BMA)	16
St James's St - Office Fit Out - Cat A (BMA)	22

Biography

Grant is a qualified Architect and Urban Designer. He has spent over 15 years in the construction industry working for award winning architectural practices on office and retail projects for commercial clients. In this sector Grant has worked on schemes ranging from £250k to £7.5 million. Grant is currently the MD of CBB Architects .

Qualifications

Bachelors degree in Architecture (BA Hons)

Masters degree in Architecture (March)

Post Graduate diploma in Construction Management (PG Dip)

Masters degree in Urban Design (MA)

Architect Practice

Cameron Bosque Brookes

Project

Sidney St

Location

Cambridge

RIBA Stages

0-4

Scope

Retail Fit Out

Completion

2023



Architect Practice

Cameron Bosque Brookes

Project

Excel House

Location

Lincoln

RIBA Stages

0-3

Scope

3 New Office Building

Development

Completion

2022







Architect Practice
Cameron Bosque Brookes
Project
Sandy
Location
Cambridgeshire
RIBA Stages
0-2
Scope
Office Refurb Cat B
Completion
2022

Architect Practice

Brimelow McSweeney

Project

Floral St

Location

Covent Garden

RIBA Stages

0-7

Scope

Retail Shell and Core

Completion

2018



Image credit: Brimelow McSweeney Architects



Image credit: Brimelow McSweeney Architects

Architect Practice

Brimelow McSweeney

Project

Floral St

Location

Covent Garden

RIBA Stages

0-7

Scope

Offices Refurb Cat A

Completion

2017



Image credit: Brimelow McSweeney Architects



Image credit: Brimelow McSweeney Architects

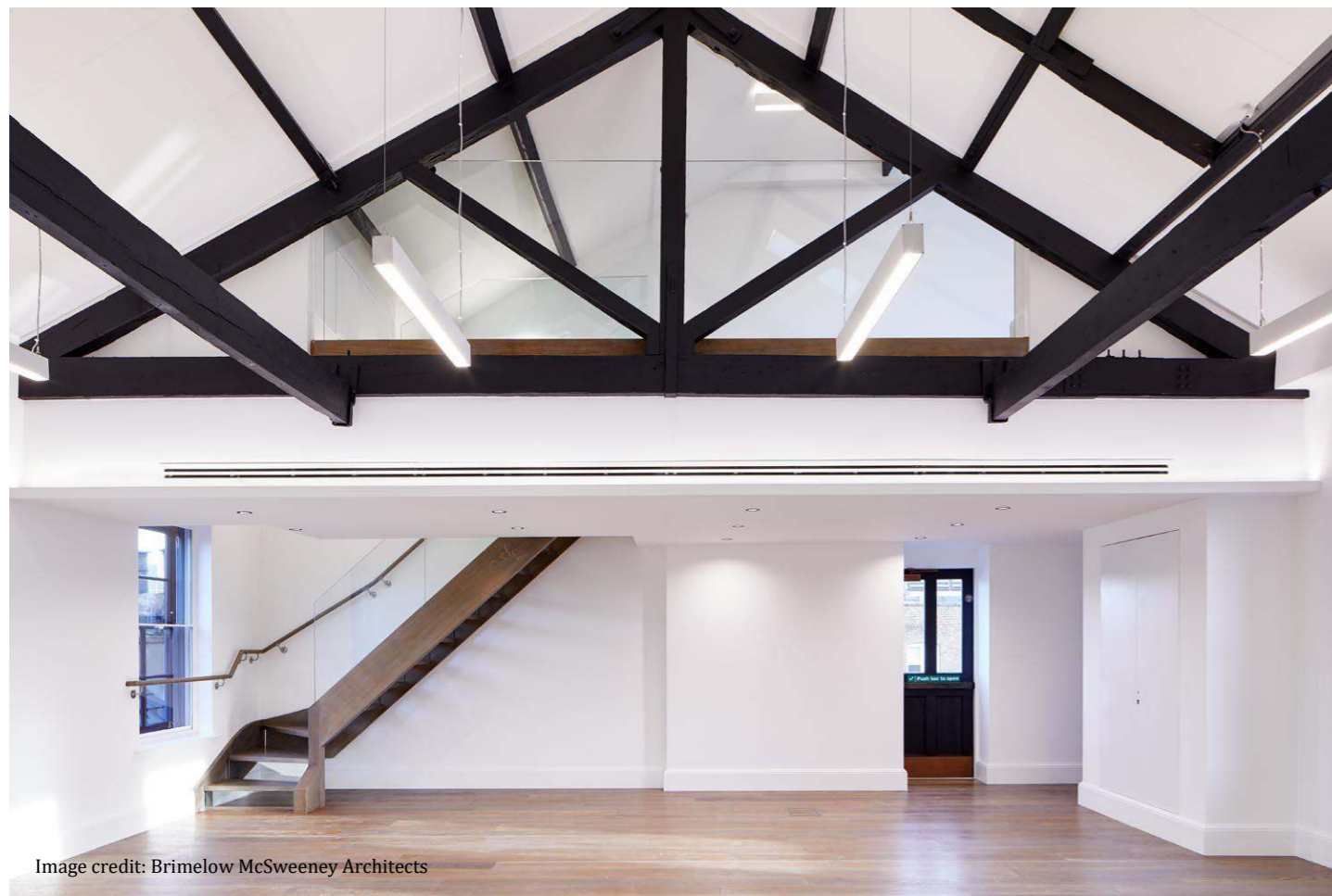


Image credit: Brimelow McSweeney Architects



Image credit: Brimelow McSweeney Architects

Image credit: Brimelow McSweeney Architects



Image credit: Brimelow McSweeney Architects



Image credit: Brimelow McSweeney Architects

Architect Practice

Brimelow McSweeney

Project

St James's

Location

Westminster

RIBA Stages

4-7

Scope

Offices Refurb Cat A

Completion

2018



Image credit: Brimelow McSweeney Architects

Office and Retail

